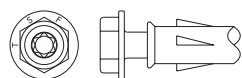
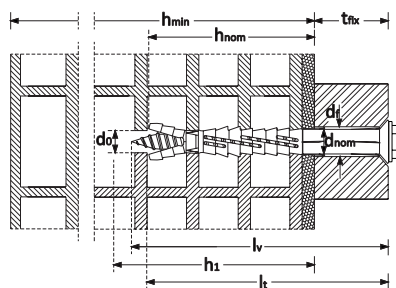
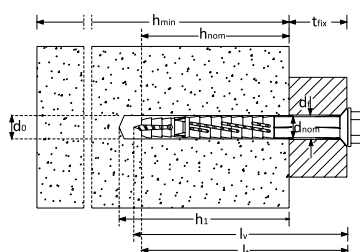


VS 32 Handyplug®

Ancorante prolungato UNIVERSALE in nylon con bordo svasato (BREV.), con vite TER finitura speciale "Steel Saver 1000h - ZL" con resistenza 1.000 ore in nebbia salina



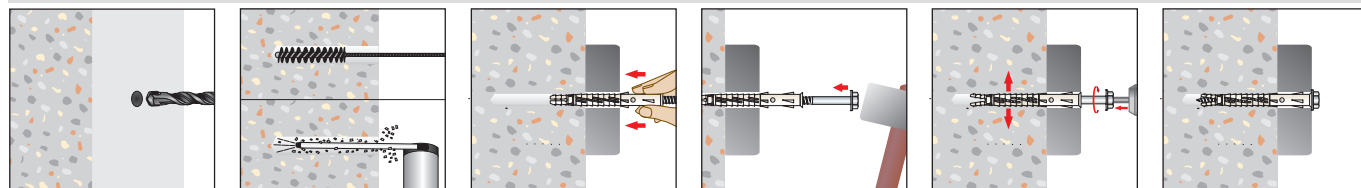
SCHEDA TECNICA



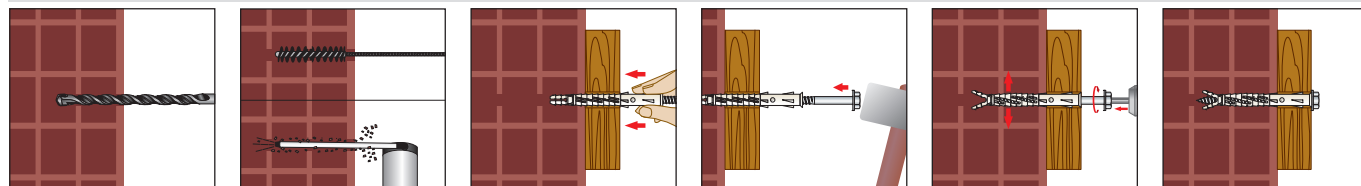
VS32 - con vite in acciaio al carbonio
finitura speciale STEEL SAVER 1000H

d_{nom}	diámetro dell'ancorante
l_t	lunghezza del tassello
d_v	diámetro della vite
l_v	lunghezza della vite
t_{fix}	spessore massimo fissabile
d_0	diámetro del foro
h_1	profondità del foro
h_{min}	spessore del materiale di supporto
h_{nom}	profondità di inserimento
h_{ef}	profondità efficace di inserimento
d_f	diámetro del foro nell'elemento da fissare
c_{min}	minima distanza dal bordo consentita
s_{min}	minimo interasse consentito
N_k	carico caratteristico a estrazione
V_k	carico caratteristico a taglio
F	Resistenza caratteristica indipendente dalla direzione del carico




Sequenza di installazione su materiali compatti



Sequenza di installazione su materiali semipieni - eseguire il foro con la sola modalità di rotazione



DATI TECNICI PER APPLICAZIONI SU CALCESTRUZZO E MURATURA

												 MURATURA FORATA *	 CALCESTRUZZO ≥ C20/25	 MURATURA PIENA	
Codice Articolo	Misura Ancorante <i>d_{nom} x l_t (mm)</i>	Misura Vite <i>d_v x l_v (mm)</i>	<i>t_{fix}</i> (mm)	<i>d_o</i> (mm)	<i>h₁</i> (mm)	<i>h_{min}</i> (mm)	<i>h_{ef}</i> (mm)	<i>d_f</i> (mm)	T	<i>c_{min}</i> (mm)	<i>s_{min}</i> (mm)	F (kN)	N _k (kN)	V _k (kN)	F (kN)
Ø 8															
Vs 32 08 080	8 x 80	6 x 85	10	8	90	70	70	9	T 30	90		0,9	1,2	3,2	2,0
Vs 32 08 100	8 x 100	6 x 105	30												
Vs 32 08 120	8 x 120	6 x 125	50												
Vs 32 08 140	8 x 140	6 x 145	70												
Ø 10															
Vs 32 10 080	10 x 80	7 x 85	10	10	90	70	70	11	T 40	90		0,9	1,6	4,4	2,0
Vs 32 10 100	10 x 100	7 x 105	30												
Vs 32 10 120	10 x 120	7 x 125	50												
Vs 32 10 140	10 x 140	7 x 145	70												
Vs 32 10 160	10 x 160	7 x 175	90												
Vs 32 10 200	10 x 200	7 x 205	130												
Vs 32 10 230	10 x 230	7 x 235	160												

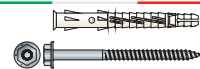
* Muratura forata in argilla secondo EN771-1-Poroton-Hochlochziegel-Block-T-24,0-0.9L Wienerberger

VS 32 Handyplug®

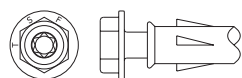
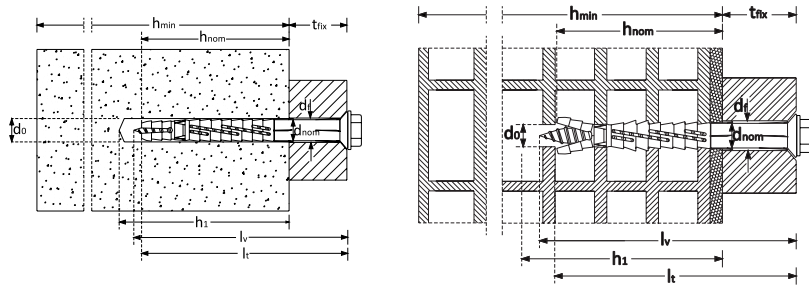


Multi-purpose countersunk edge nylon anchor, with 6-lobe recess hexagonal washer head special wood screw, special coating "Steel Saver® 1000h - ZL"

Handyplug
THE FACTOTUM PLUG



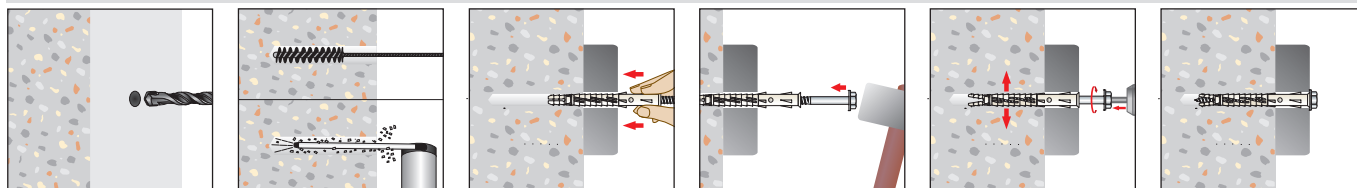
TECHNICAL DATA SHEET



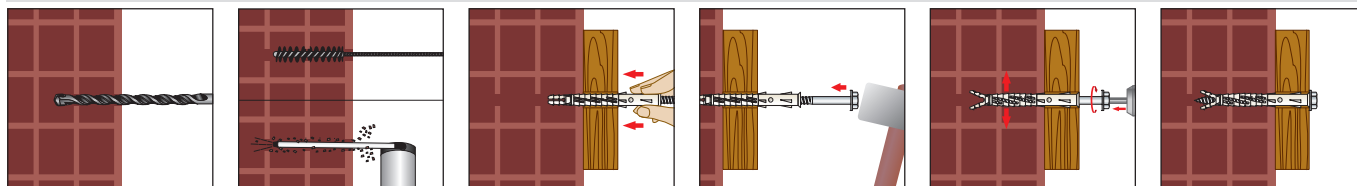
VS32 - with arboned steel screw,
"Steel Saver® 1000h - ZL"

d_{nom}	anchor diameter
l_t	anchor length
d_v	screw diameter
l_v	screw length
t_{fix}	maximum thickness of fixture
d_o	drill hole diameter
h_1	depth of drill hole
h_{min}	minimum thickness of the member
h_{nom}	minimum overall anchor embedment depth
h_{ef}	effective anchorage depth
d_f	diameter of clearance hole in the fixture
c_{min}	minimum allowable edge distance
s_{min}	minimum allowable spacing
N_k	characteristic resistance to tension load
V_k	characteristic resistance to shear load
F	Characterisitch resistance indipendent from the load direction




Installation sequence in concrete and solid masonry



Installation sequence in hollow masonry - make the drill hole with rotary drilling only



TECHNICAL DATA FOR USE IN CONCRETE AND MASONRY

												 HOLLOW MASONRY *	 CONCRETE ≥ C20/25	 SOLID MASONRY	
Item Code	Anchor Size <i>d_{nom} x l_t (mm)</i>	Screw Size <i>d_v x l_v(mm)</i>	t _{fix} (mm)	d _o (mm)	h ₁ (mm)	h _{min} (mm)	h _{ef} (mm)	d _f (mm)	T	c _{min} (mm)	s _{min} (mm)	F (kN)	N _k (kN)	V _k (kN)	F (kN)
Ø 8															
Vs 32 08 080	8 x 80	6 x 85	10	8	90	70	70	9	T 30	90		0,9	1,2	3,2	2,0
Vs 32 08 100	8 x 100	6 x 105	30												
Vs 32 08 120	8 x 120	6 x 125	50												
Vs 32 08 140	8 x 140	6 x 145	70												
Ø 10															
Vs 32 10 080	10 x 80	7 x 85	10	10	90	70	70	11	T 40	90		0,9	1,6	4,4	2,0
Vs 32 10 100	10 x 100	7 x 105	30												
Vs 32 10 120	10 x 120	7 x 125	50												
Vs 32 10 140	10 x 140	7 x 145	70												
Vs 32 10 160	10 x 160	7 x 175	90												
Vs 32 10 200	10 x 200	7 x 205	130												
Vs 32 10 230	10 x 230	7 x 235	160												

* Perforated clay brick, acc. EN 771-1:2011, Poroton-Kleinformat Hlzb- 2DF-0.9 "Wienerberger"